



| **PBN CVD**





PBN

PBN

(PBN)

, 99.999%

,

가

· ,

(CVD)

, PBN

가 , ,

PBN

.



- ▶ ,
- ▶ - 99.999%
- ▶ . . . ,
- ▶ / , .
- ▶ / /
- ▶ 1000°C .
- ▶ , 2000°C
- ▶ 가 (), 3000°C B N
- ▶ , .
- ▶ , , .

OLED	MOCVD	
(VGF, LEC) 가		PBN
(MBE) 가	PBN	

	1.95-2.22	g/cm ³
	112	MPa
	173	MPa
	154	MPa
	18	GPa
	"a" 60 "c" 2	W/m°C
	0.90 (RT)	J/g·°C
	2 × 10 ¹⁵	Ω.cm
	>2 × 10 ⁵	D.C. volts/mm
	1.1 × 10 ⁻⁴ (@20GHz)	
	"a" 5.20	
	<10	ppm

— VGF 가 , LEC 가 , PBN

(GaAs, InP, Ge)

VGF, VB, HB, LEC

PBN 가

, PBN

▶ > 99.999%

▶ , 가

▶ 가 ,

▶

▶

▶

VGF 가

- ▶ :2",3",4",5",6" ,8",10",12"
- ▶ :>99.999%
- ▶ :100mm-500mm
- ▶ :0.4mm-2.0mm

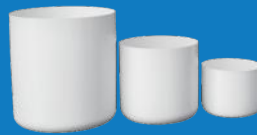


*

가

LEC 가

- ▶ :2",3",4",5",6" ,8", 14", 20"
- ▶ :>99.999%
- ▶ :100mm-500mm
- ▶ :0.4mm-2.0mm

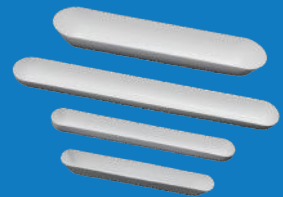


*

가

PBN

- ▶ :2" ,3" ,4"
- ▶ :>99.999%
- ▶ :100mm-500mm
- ▶ :0.8mm-1.2mm



*

가

OLED & MBE & CIGS

—PBN 가

OLED, MBE, CIGS

PBN 가

产品特点

▶ > 99.999%

▶

▶ ,가

▶

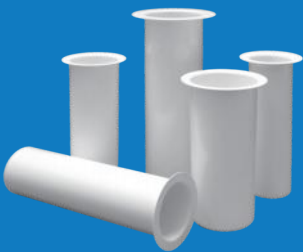
▶

▶

▶

OLED 가

- ▶ :50mm-150mm
- ▶ :0.7mm-1.2mm
- ▶ :100mm-400mm
- ▶ :>99.999%
- ▶ :150cc, 350cc, 550cc, 700cc, 800cc, 1000cc, 2000cc



*

가

MBE 가

- ▶ :25mm-260mm
- ▶ :0.6mm-1.5mm
- ▶ :20mm-700mm
- ▶ :>99.999%
- ▶ : , , ,
- ▶ :5cc, 20cc, 60cc, 125cc, 700cc, 1700cc, 3700cc



*

가

CIGS 가

- ▶ :Max 260mm
- ▶ :>99.999%
- ▶ :Max 500mm
- ▶ :0.4-2.0mm



*

가

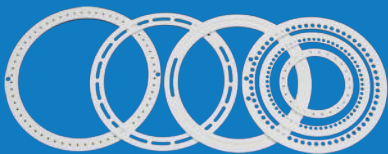
가, MOCVD, PBN

PBN

>99.999%

가

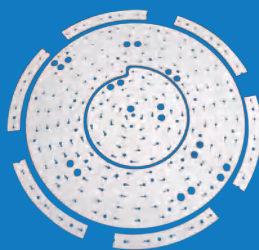
- ▶ :5mm-300mm
- ▶ :Max 5mm
- ▶ :>99.999%
- ▶ :2.10g/cm³- 2.20gcm³



* 가

MOCVD

- ▶ :Max φ500mm
- ▶ :Max 400x400mm
- ▶ :Max 5mm
- ▶ :Max 2.22g/cm³



* 가

PBN

- ▶ :112W/m°C
- ▶ :>DC2.4X10⁸ V/mm
- ▶ (D:5.27
- ▶ (: 1.1*10⁻⁴ (@20GHz)



* 가

PBN

—

, 가 ,

PBN

가 .

가 ,

가 ,

PBN

가 .

▶ > 99.999%

▶

▶

▶

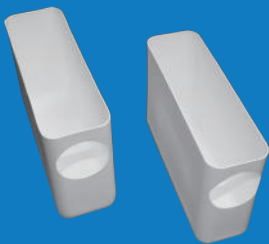
▶

▶

规格参数

PBN

- ▶ : Max 500mm
- ▶ (): Max 150mm
- ▶ : Max 150mm
- ▶ : 0.4-2.0mm



*

가

PBN

가

- ▶ : Max 260mm
- ▶ : >99.999%
- ▶ : Max 500mm
- ▶ : 0.4-2.0 mm

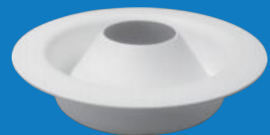


*

가

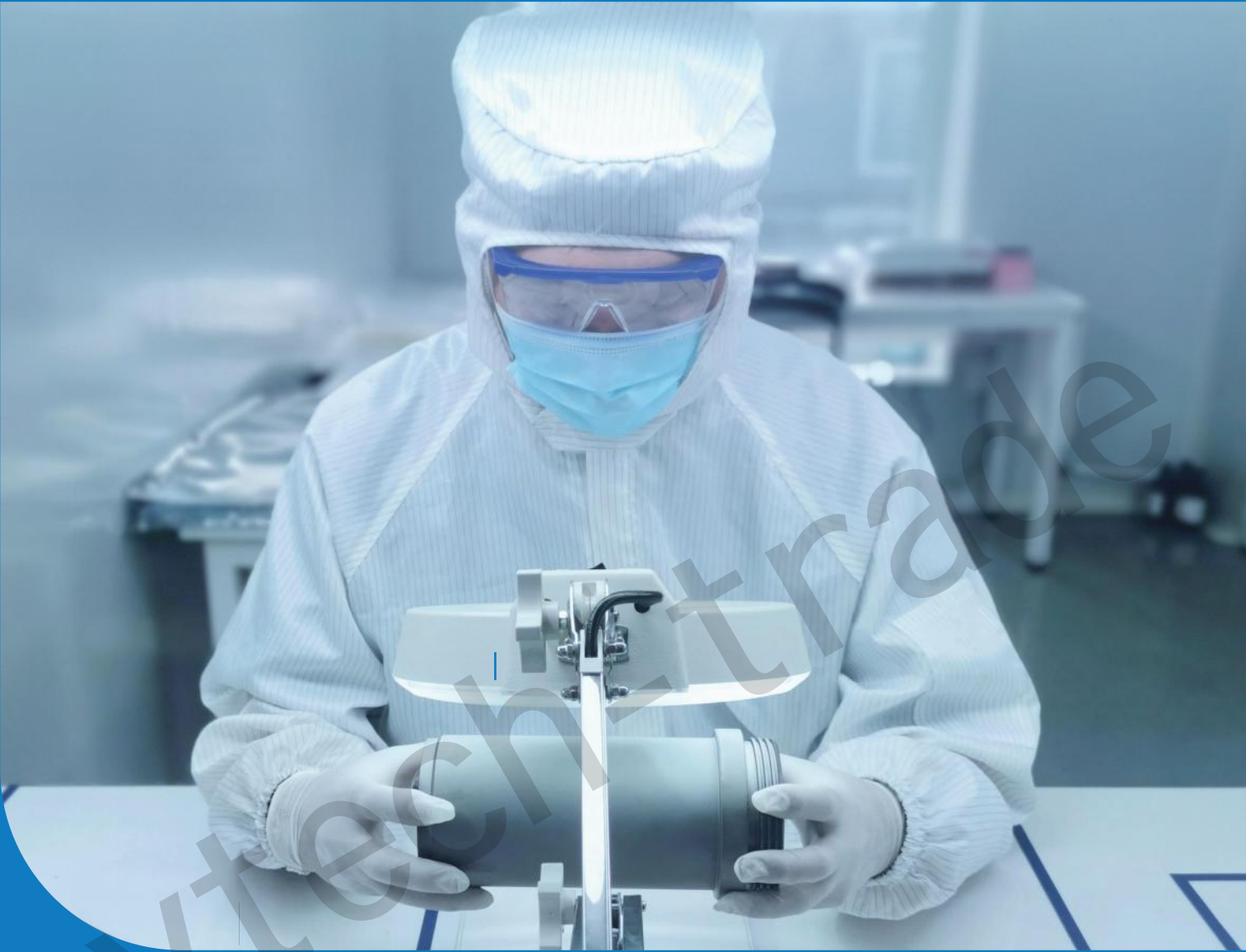
PBN

- ▶ : Max 150mm
- ▶ : >99.999%
- ▶ : 0.4-1.0mm



*

가



PG

PG

(PG) 가 1800~2000°C
(CVD) ,
가 , 가 .

- ▶ ,
- ▶ (>99.999%)
- ▶ , 가
- ▶ , ,
- ▶ , ,
- ▶ , ,
- ▶ , ,



	(EBM) 가	
		MOCVD
		가

	2.15-2.22	g/cm ³	-
	2×10 ⁻⁴	Ω·cm	ab
	0.6	Ω·cm	c
	382	W/m°C	ab
	2.8	W/m°C	c
(20°C)	0.5	μm/m°C	ab
	3650	°C	-
	80	MPa	ab
()	130	MPa	ab
	116	MPa	c
()	80	MPa	ab
()	20	GPa	ab

—PG , PG

PG

PG



PG



—PBN/PG/PBN

PBN/PG/PBN

PBN,

PG

(>99.999%)

가

가

: 1600°C 가



, CVD 가

가

가 가

가

()

/ (mm)

() (Ω)

()

0.5"-15"

Max 4.0

5-35

()

1"-12"

Max 400

3-25

— 가 , (,)

(Ta)

16.6g/cm³,

2996°C

가

OLED, MBE, CIGS

•

- ▶
- ▶
- ▶
- ▶
- ▶
- ▶

